

SMD COMMON MODE TOROIDS COILS / SHT TYPE

FEATURES

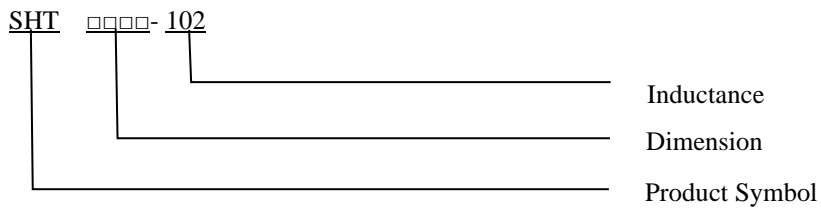
- ◆ Reduced components height
- ◆ High rated currents
- ◆ Suitable for reflow soldering
- ◆ RoHS-compatible



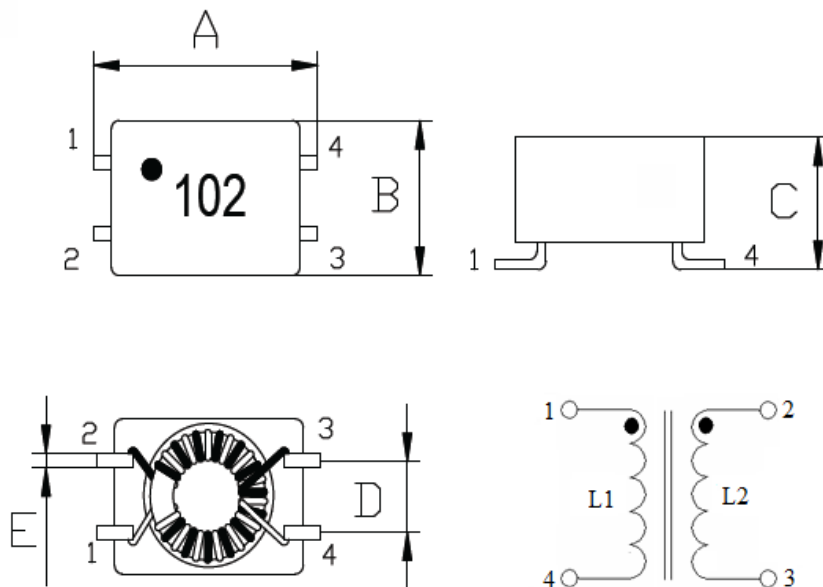
APPLICATIONS

- ◆ Automotive applications
- ◆ Industrial applications
- ◆ Telecom applications

ORDERING CODE



SHAPES



DIMENSIONS (UNIT: mm)

Part No.	A	B	C	D	E
SHT0905	9.0 ± 0.5	5.5 ± 0.4	5.2 (MAX)	2.54 ± 0.3	0.5 (REF)



CORE MASTER ENTERPRISE CO., LTD.

<http://www.coremaster.com.tw>

SMD COMMON MODE TOROIDS COILS / SHT TYPE

ELECTRICAL CHARACTERISTICS FOR SHT0905

Part No.	Inductance L1=L2 (μ H)	Test Frequency (KHz)	RDC RDC1=RDC2 ($m\Omega$) MAX	IDC (A) MAX
SHT0905-110 □	11 \pm 50%	100KHz / 0.1V	120	1.0
SHT0905-250 □	25 \pm 50%	100KHz / 0.1V	120	0.9
SHT0905-510 □	51 \pm 50%	100KHz / 0.1V	195	0.8
SHT0905-101 □	100 \pm 50%	100KHz / 0.1V	250	0.7
SHT0905-471 □	470 \pm 50%	100KHz / 0.1V	280	0.7
SHT0905-102 □	1000 \pm 50%	100KHz / 0.1V	300	0.7
SHT0905-222 □	2200 \pm 50%	100KHz / 0.1V	400	0.5
SHT0905-472 □	4700 \pm 50%	100KHz / 0.1V	700	0.4



CORE MASTER ENTERPRISE CO., LTD.

<http://www.coremaster.com.tw>